



The Sunshine Sickle Cell Project

A Complimentary CME/CNE Live Meeting/Webinar Series
Addressing Best Care for Sickle Cell Patients

Developed in Partnership with the Foundation for Sickle Cell Disease Research

A Series of Virtual and Hybrid Live Meetings Developed for
Clinicians Who Provide Care to Patients with Sickle Cell Disease

1.0 Hour
CME,
CNE, CPE

Provided by



Interim Report

for live webinars held on:

- ✓ April 15, 2021
- ✓ April 22, 2021
- ✓ April 27, 2021



Supported by an
educational grant from



Supported by an educational grant from Novartis Pharmaceuticals

Faculty

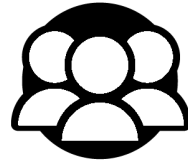


**Lanetta Bronté-Hall, MD,
MPH, MSPH**

President
Foundation for Sickle Cell Disease
Research
Hollywood, Florida

Andrew Campbell, MD

Director, Comprehensive Sickle
Cell Program
Children's National Medical
Center
Washington, DC



Activity Description: A virtual/hybrid meeting series developed specifically for clinicians who live in Florida



Focus On Advances in the Prevention of Pain Crisis in SCD:

- Consider the incidence and burden of sickle cell disease in Florida and nationwide
- Utilize appropriate therapy for the treatment and prevention of acute vaso-occlusive crisis in patients with sickle cell disease
- Talk with patients and families about curative options for sickle cell disease
- Institute a quality improvement project to address barriers to optimal care and improve outcomes for patients with sickle cell disease, in collaboration with *The Sunshine Sickle Cell Project* quality improvement initiative

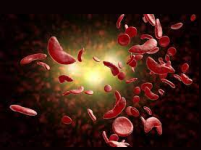


Outcomes Methodology: Post-activity evaluations to measure activity-related changes in clinician knowledge, competence & practices



Intended Audience: Community practitioners including:

- ✓ Hematologists
- ✓ Primary Care Providers
- ✓ Pediatric Specialists
- ✓ Emergency Department Clinicians
- ✓ Other Allied Healthcare Professionals



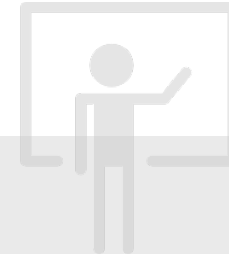
Supported by an educational grant from Novartis Pharmaceuticals

Agenda

5 mins	Welcome and Baseline Knowledge Assessment
	Overview of Sickle Cell Disease (SCD)
10 mins	<ul style="list-style-type: none"> • Case Study #1 - Vaso-occlusive crisis (VOC) • Impact on patient survival, quality of life and cost for health systems in Florida and nationwide • Barriers to SCD care in Florida and nationwide • Socioeconomic, patient/provider misperceptions, health insurance status, etc.
	New Therapeutic Approaches for VOC in Sickle Cell Disease
15 mins	<ul style="list-style-type: none"> • Blocking P-selectin to prevent sickle cell-endothelial adhesive events • Targeting hemoglobins' affinity for oxygen to prevent red cell sickling • Key considerations for clinical practice; risks, benefits, and patient/family education • Progress towards curing SCD: hematopoietic stem cell transplantation and gene therapy
	Patient Voices
5 mins	<ul style="list-style-type: none"> • Clinical Case Study #2 • Participants will watch a short video clip of one patient/caregiver with SCD in Florida
	The Sunshine Sickle Cell Project Quality Improvement Initiative
10 mins	<ul style="list-style-type: none"> • Strategies to address barriers to optimal care for patients with SCD • Overview of <i>The Sunshine Sickle Cell Project</i> quality improvement initiative and how participation can improve care for patients with SCD and benefit your organization • Steps for involvement in the initiative
15 mins	Interactive Discussion

Format

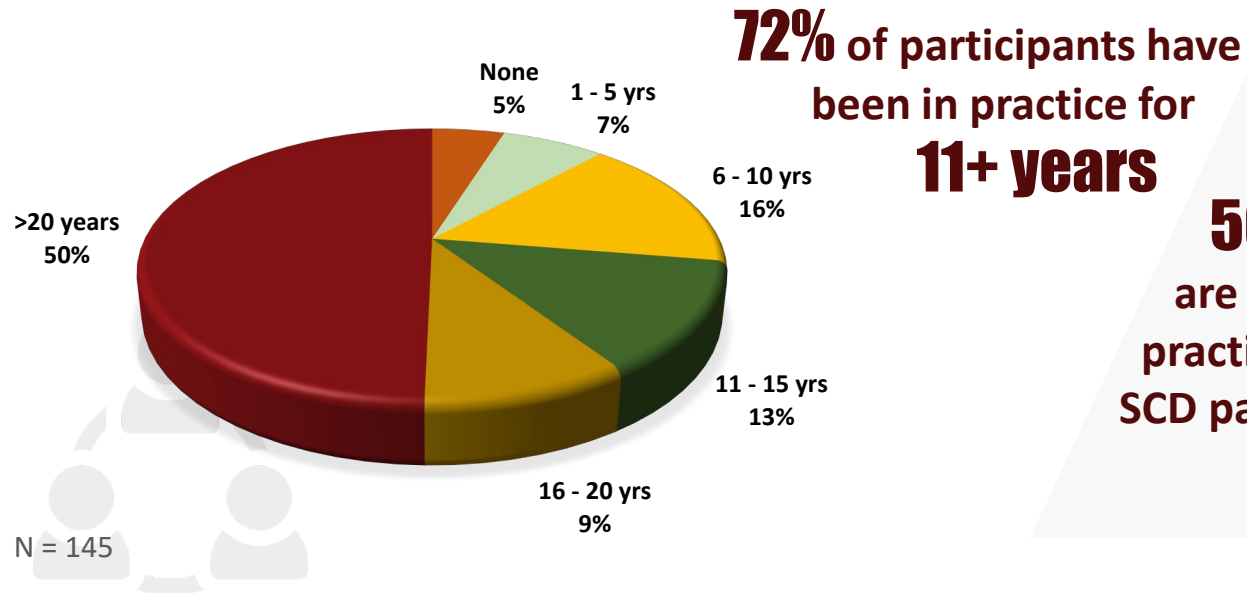
The program design features an interactive format incorporating case discussion and patient/clinician perspectives. The core agenda will be tailored slightly to accommodate the two different primary audiences, pediatric and adult. National experts in SCD will lead each session. The agenda also incorporates an interactive discussion on *The Sunshine Florida Sickle Cell Project* quality improvement initiative and how participation can improve care for patients.





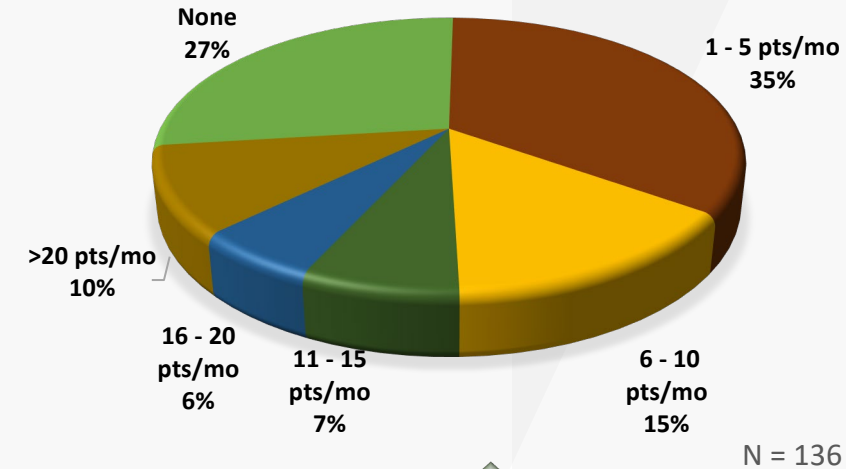
Supported by an educational grant from Novartis Pharmaceuticals

The Majority of Participants Were Experienced Practitioners

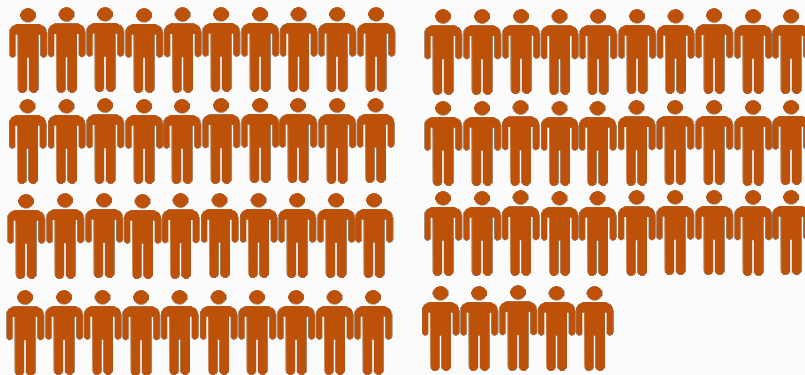


50% of participants are community practitioners, see <10 SCD patients/month

Learners Have Almost **10,200** SCD Patient Interactions Each Year



Participants Reported that Post-activity Changes Would Impact a Significant Number of Patients



Each participant has **75** interactions with SCD patients per year

96% reported that the faculty's knowledge of SCD was *"excellent"* or *"very good"*

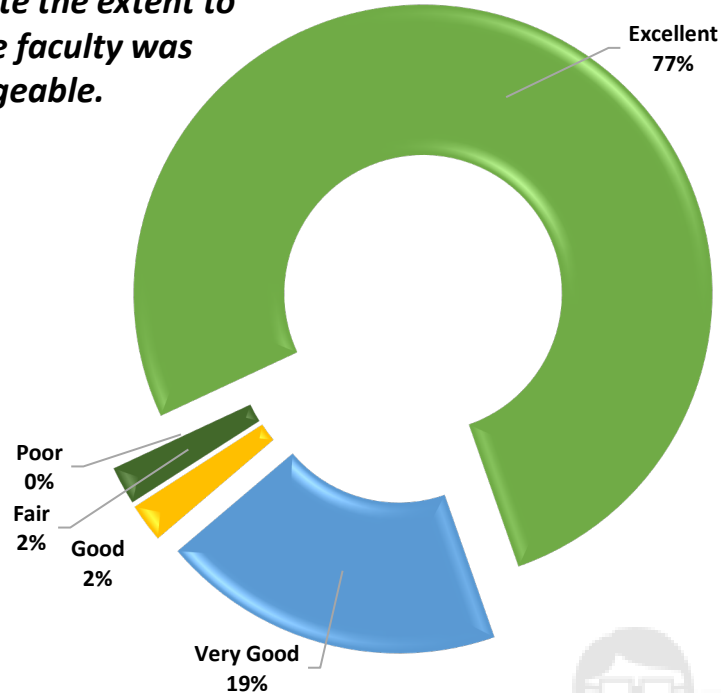
Participants Were Very Satisfied with Faculty, Content

Supported by an educational grant from Novartis Pharmaceuticals

Learners Provide **High Marks** for **Faculty** and **Clinical Content**

Question:

Please rate the extent to which the faculty was knowledgeable.



96% of participants felt the faculty conveyed the content effectively

81% of learners: learning objectives coverage was **“Extremely Well”** or **“Very Well”**

89% of participants indicated the content was clinically relevant to their current practice

83% of attendees: intend to make **at least one practice change** as a result of participating in this activity

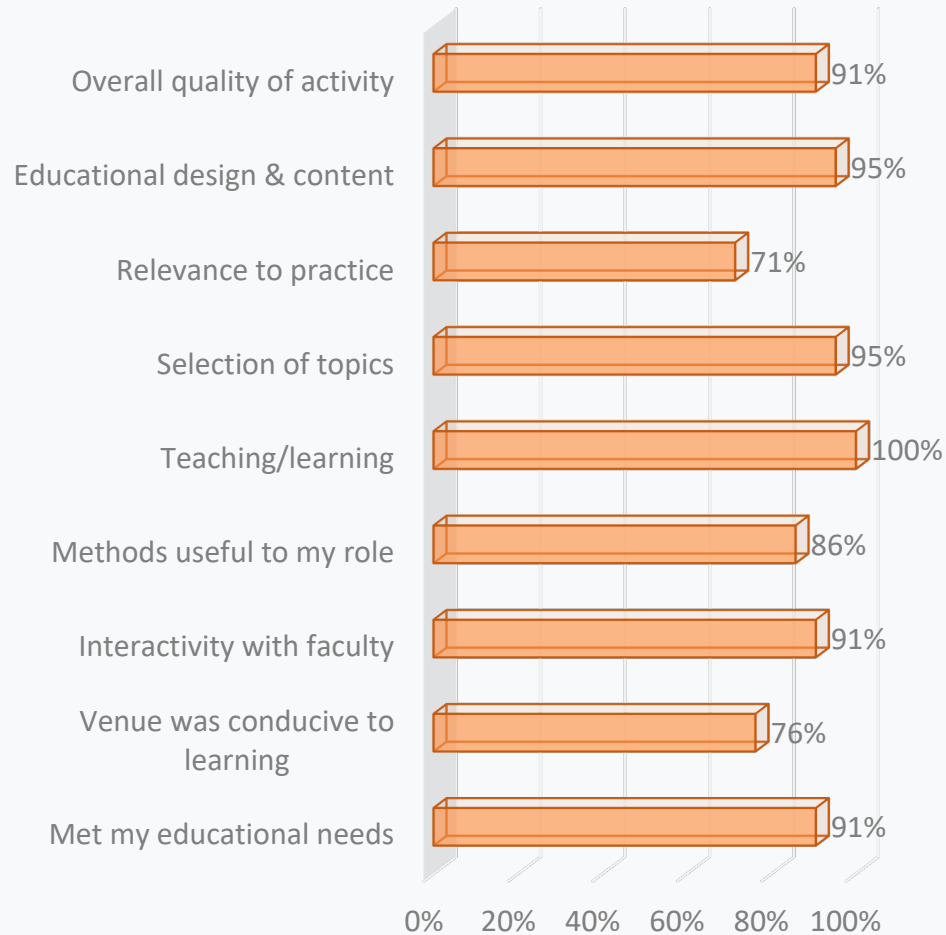
100% of participants indicated the content was fair and free of commercial bias

92% of participants indicated this activity will assist in improving the quality of their patient care

Participants Very Satisfied with Format, Quality

Supported by an educational grant from Novartis Pharmaceuticals

Participants Rated the Activity Highly for Format, Interactivity, Overall Quality



38% Format and material were useful & appropriate to my practice, no changes needed

38% would like more case studies

25% would like more interactivity with attendees

13% would like break-out sessions for sub-topics

13% would like more time for Q&A

89%

of participants had the opportunity to discuss relevant practice issues with faculty during the activity



Activity Impact on Clinical Practice Strategies

Supported by an educational grant from Novartis Pharmaceuticals

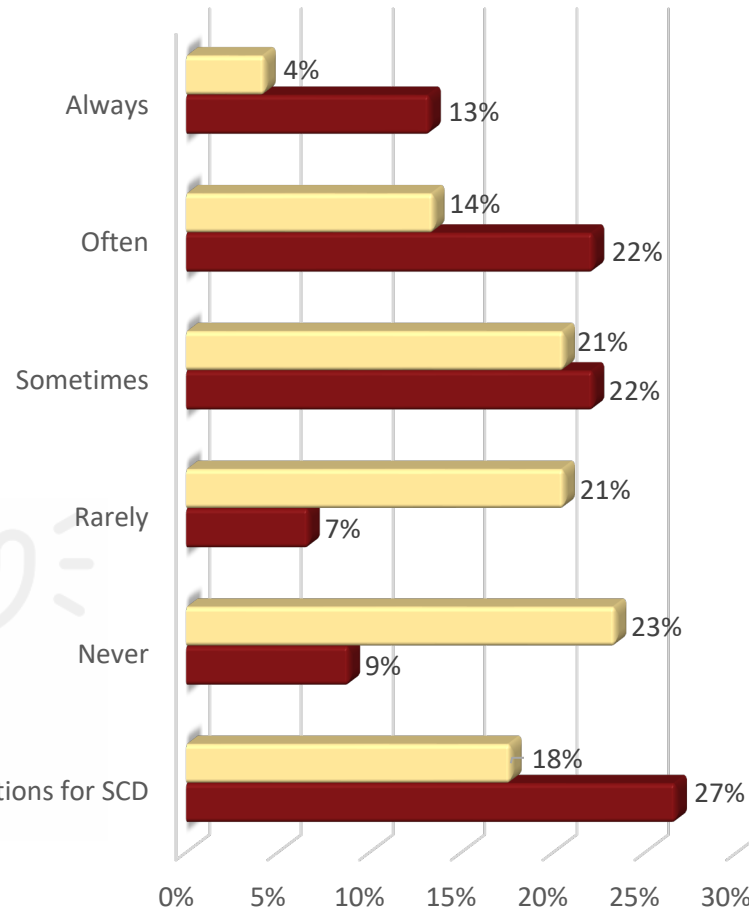
Learners were asked how often they would use key therapeutic strategies in clinical practice post-activity

Question: How often do you currently discuss curative options for SCD with your patients?

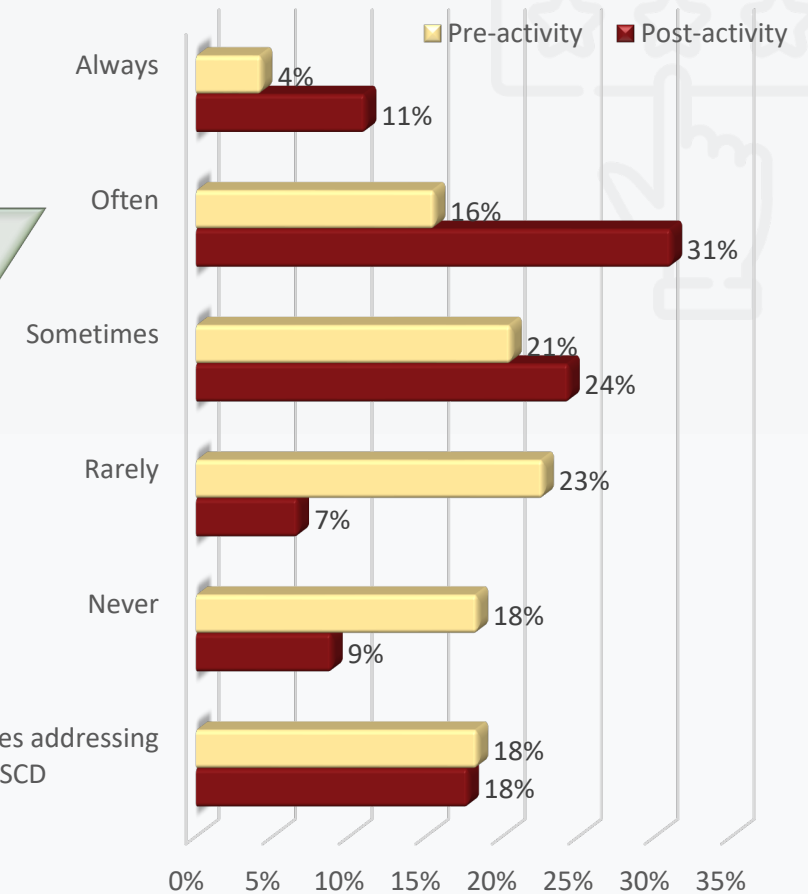
Question: How often do you currently utilize quality improvement (QI) initiatives to address barriers to optimal care and improve outcomes for patients with SCD?

57%

of participants **always, often** or **sometimes** discuss curative options for SCD with their patients, post-activity



Almost **75%** of participants will **always, often** or **sometimes** utilize QI initiatives to improve outcomes for patients with SCD post-activity

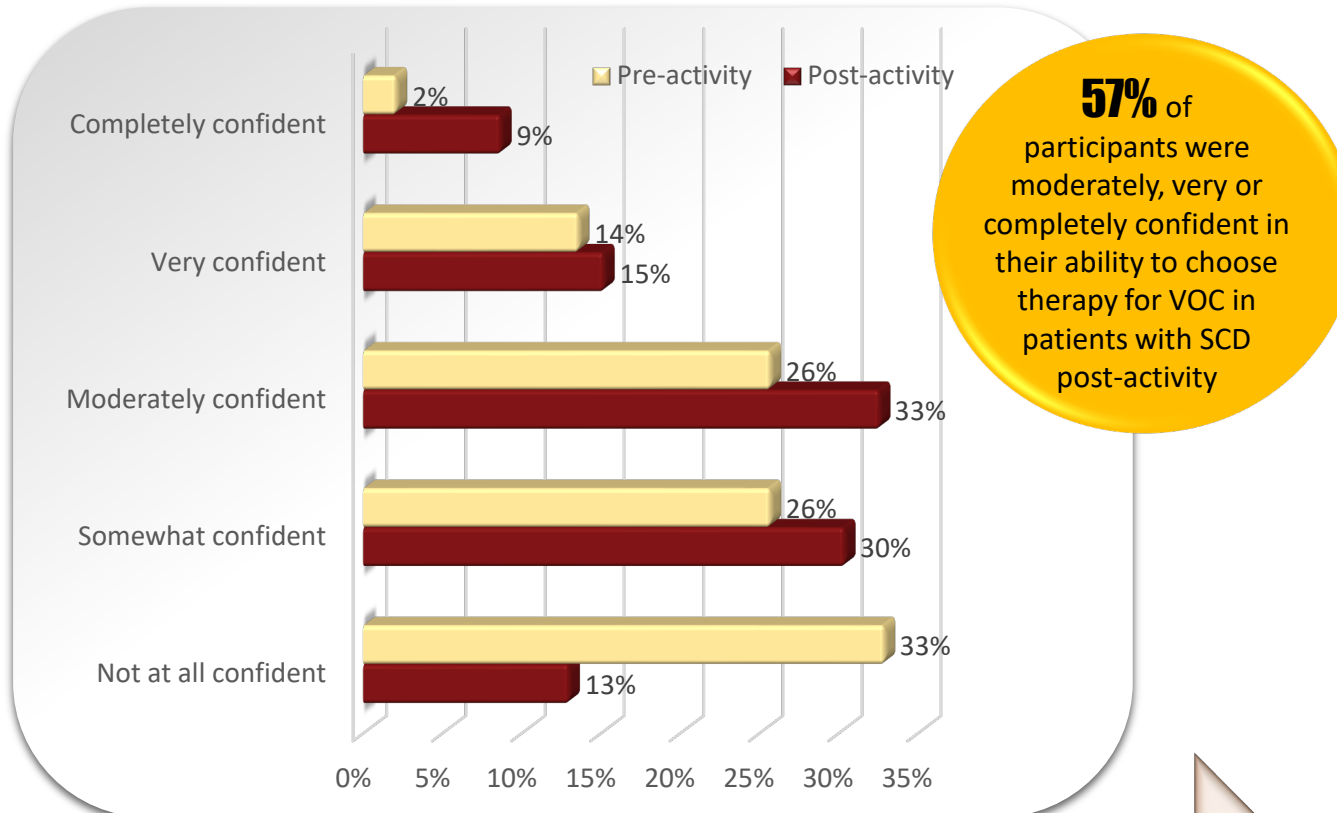


Activity Impact on SCD Treatment, Management

Supported by an educational grant from Novartis Pharmaceuticals

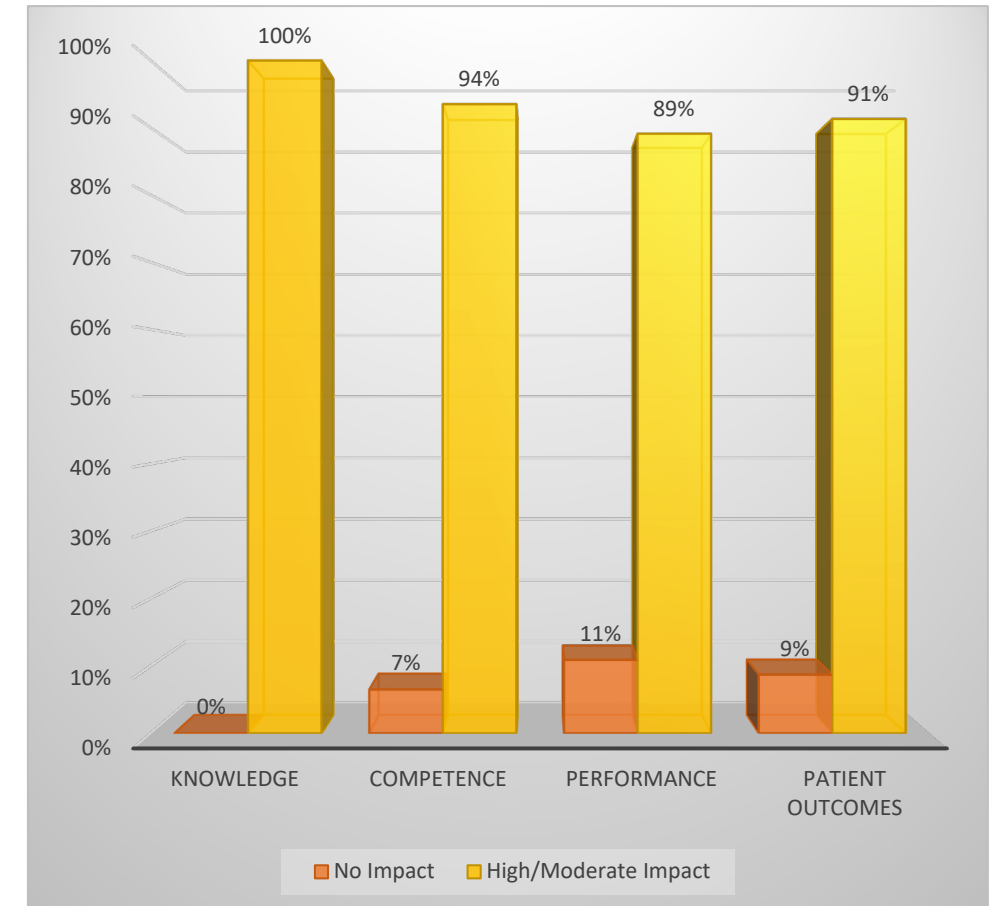
Activity Impact on Confidence, Competence, Performance and Patient Outcomes

Question: Please rate your current level of confidence in your ability to choose appropriate therapy for the prevention and treatment of vaso-occlusive crisis (VOC) in patients with sickle cell disease (SCD).



Overall, learners demonstrated a **15.1%** increase in confidence post-activity

Participants Felt That the Activity Would Have an Impact On:

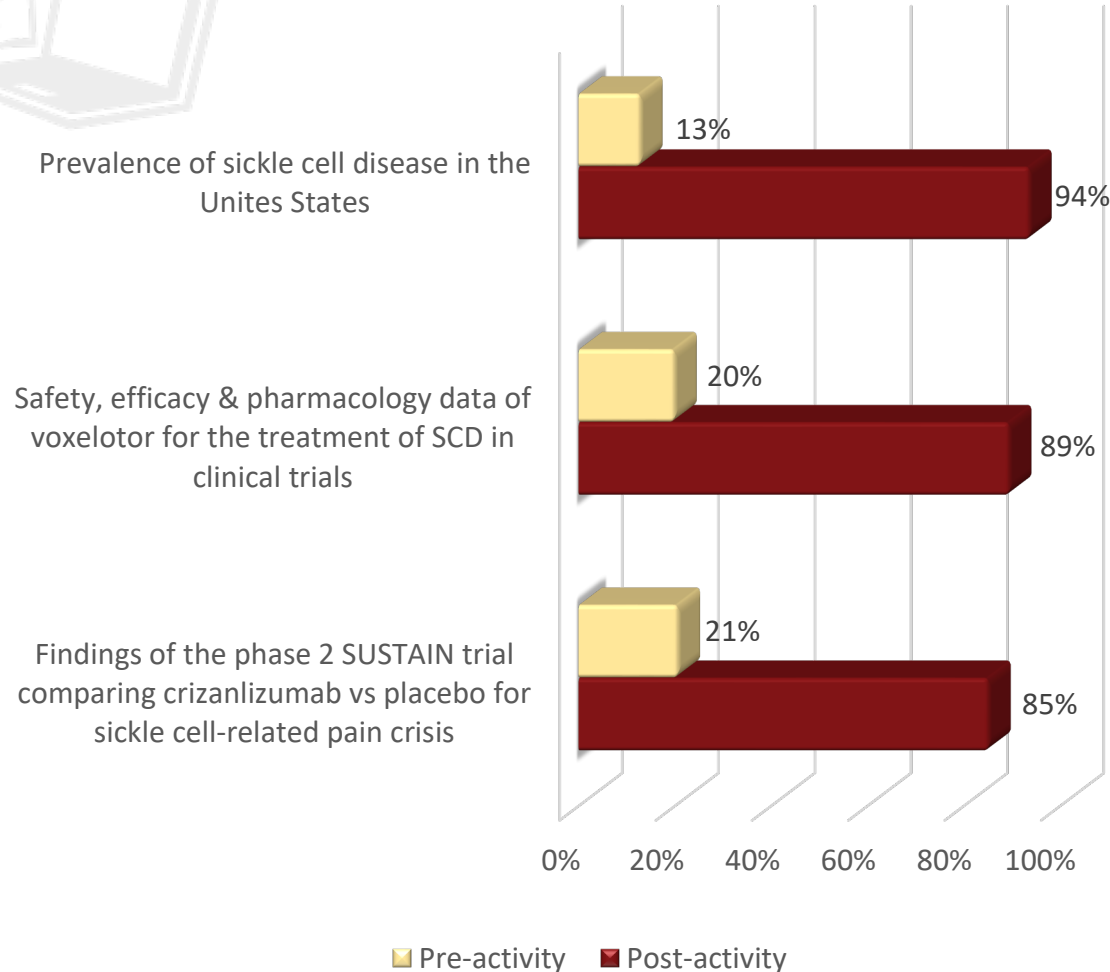


Changes in Knowledge Following Participation

Supported by an educational grant from Novartis Pharmaceuticals



Learners demonstrated significant changes in knowledge pre- versus post-activity



Pre-activity responses indicate significant educational needs in this clinician group

4 out of 5 of learners were unable to identify, *pre-activity*, the percent of patients who experienced a hemoglobin response to a dose of 1,500 mg voxelotor in clinical trials

Overall, learners demonstrated a
71.3%
increase in knowledge post-activity

Only **21%** of learners were able to identify, *pre-activity*, the reduction in sickle cell-related pain crisis following therapy with crizanlizumab 5.0 mg/kg in the phase 2 SUSTAIN clinical trial



Learner Assessment: Activity Had Significant Impact

Supported by an educational grant from Novartis Pharmaceuticals

*Learners were asked what actions they may take
as a result of participating in this activity*

- ✓ Assure my patients comfort by reducing stigma and promoting their emotional stability to improve quality of care
- ✓ Review newer agents, gene therapies, and ongoing clinical trials in my region that would be appropriate for adults with sickle cell disease
- ✓ Evaluate adult patients with sickle cell disease and identify what may be causing their pain
- ✓ Investigate the Quality Improvement Initiative to assist in translating research to my practice

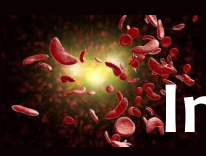
13% would like more education prior to making a change in clinical practice

34% will increase their familiarity with newer agents and gene therapies and will take steps to increase their knowledge of ongoing clinical trials for adults with SCD

23% of respondents will increase translation of research into clinical practice through the QI Initiative

25% will evaluate their adult patients with SCD to identify the source of their pain

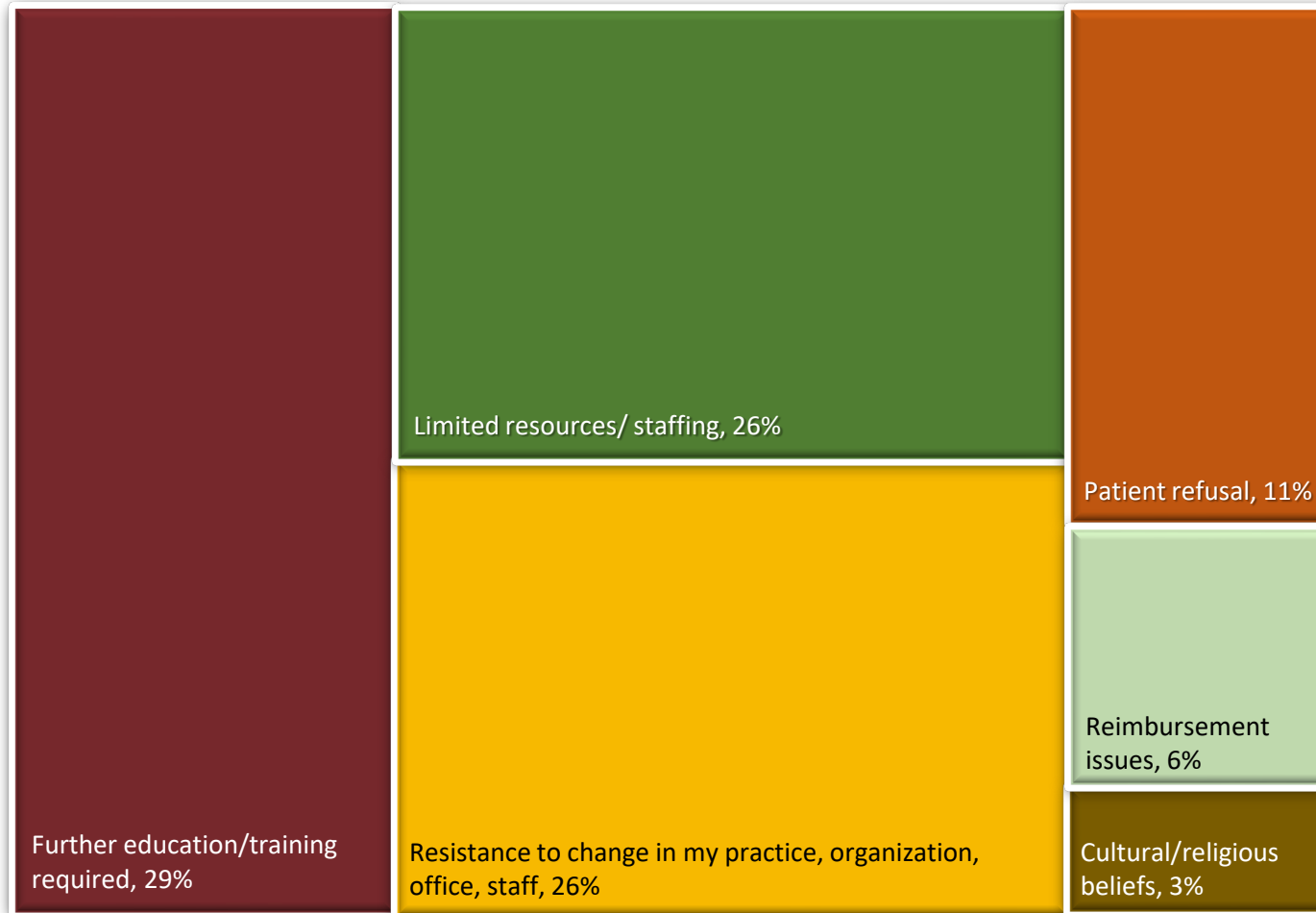




Implementing Practice-based Changes Post-activity

Supported by an educational grant from Novartis Pharmaceuticals

Learners were asked what barriers exist that would prevent them from implementing activity-related changes



*Learners could select multiple barriers

75% of participants indicated they were committed or very committed to implementing the identified changes in their practice

96% of participants would recommend this activity to a colleague





Learners Are Seeking Additional Insights, Resources


Supported by an educational grant from Novartis Pharmaceuticals

Following participation, learners....

....articulate an interest in greater access to experts such as through extended Q & A sessions

The QI initiative will allow for a greater interaction with clinical SCD experts. All attendees will receive an invitation to participate in the QI initiative from Dr. Bronte-Hall.

....express additional interest in the psychosocial needs of patients and caregivers, as well as resources that may be utilized



....request additional insight on therapy algorithms and suggestions for changes in therapy when patients are on same medications for long periods of time





The Sunshine Sickle Cell Project

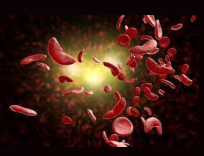
A Complementary CME/CNE Live Meeting/Webinar Series
Addressing Best Care for Sickle Cell Patients

Developed in Partnership with the Foundation for Sickle Cell Disease Research

Appendix:

Knowledge Questions



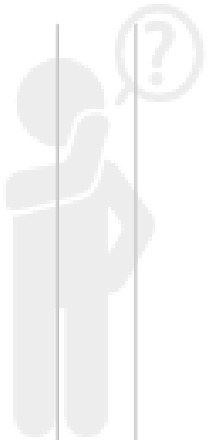
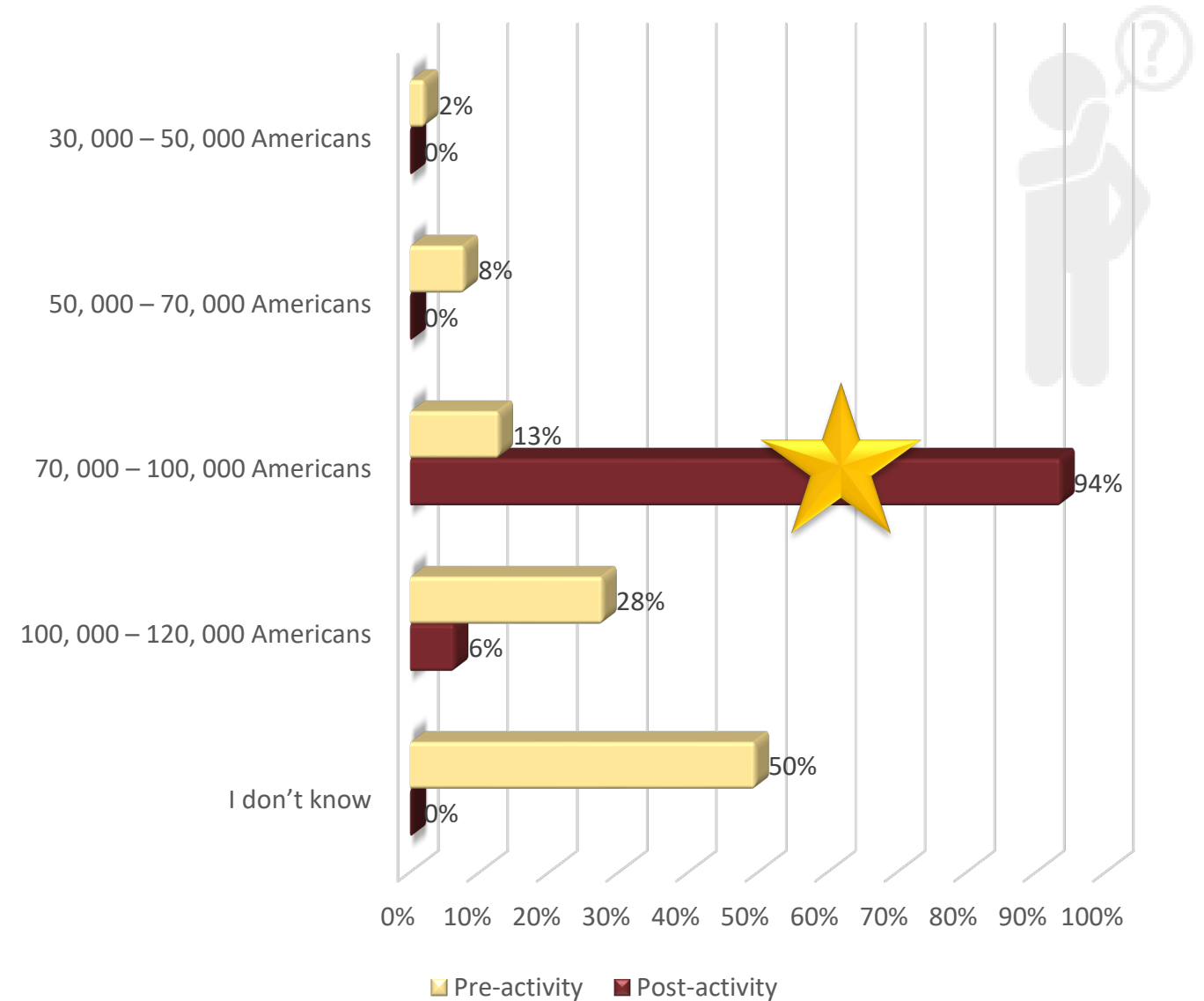


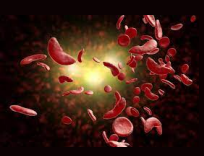
Post-activity Knowledge Questions

Supported by an educational grant from Novartis Pharmaceuticals

Question #1:

According to current data, what is the prevalence of sickle cell disease in the United States?





Post-activity Knowledge Questions

Supported by an educational grant from Novartis Pharmaceuticals

Question #2:

Which statement accurately describes voxelotor for the treatment of SCD in clinical trials?

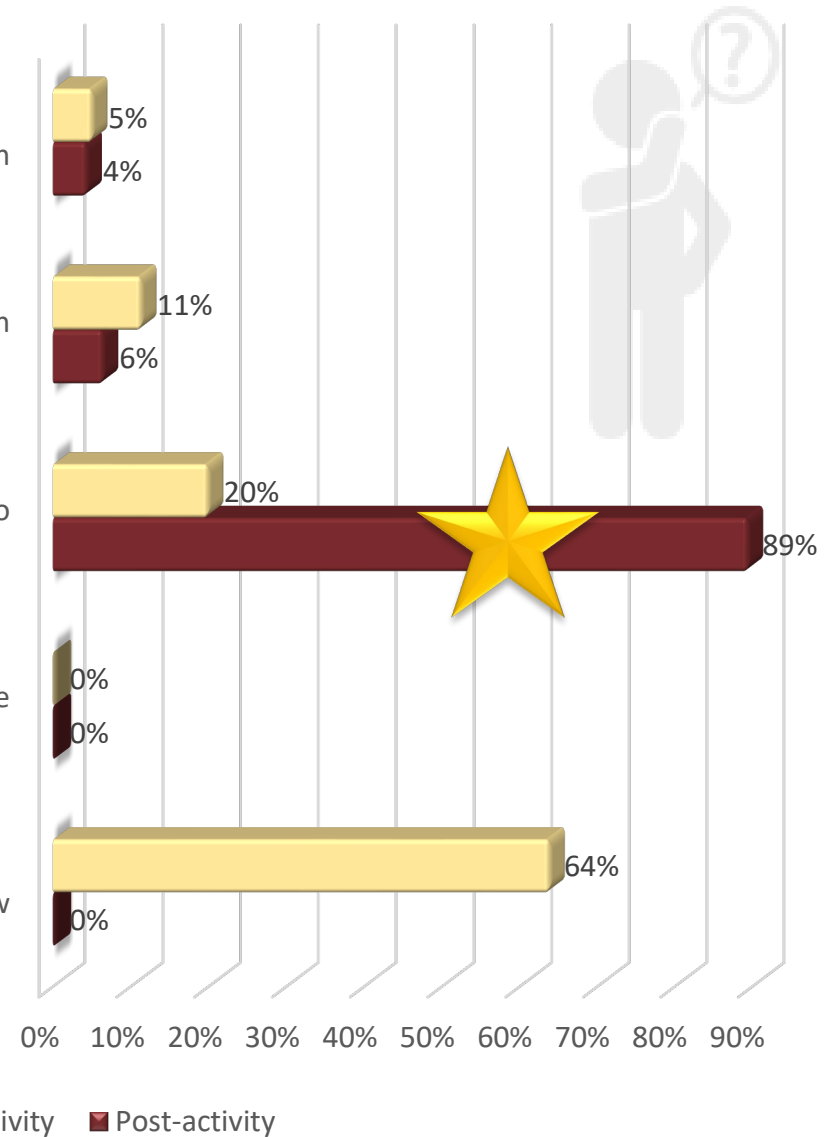
It is humanized IgG2 antibody that inhibits P-selectin

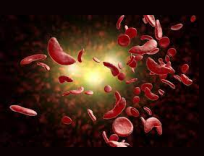
Voxelotor at the 1500-mg dose elicited a hemoglobin response in 38% of patients

59% of patients had a hemoglobin response to voxelotor at the 1500-mg dose

Hemoglobin response was equivalent among the voxelotor and placebo treatment arms

I don't know





Post-activity Knowledge Questions

Supported by an educational grant from Novartis Pharmaceuticals

Question #3:

What were the findings of the phase 2 SUSTAIN trial, which compared crizanlizumab vs placebo for the treatment of sickle cell-related pain crisis (SCPC)?

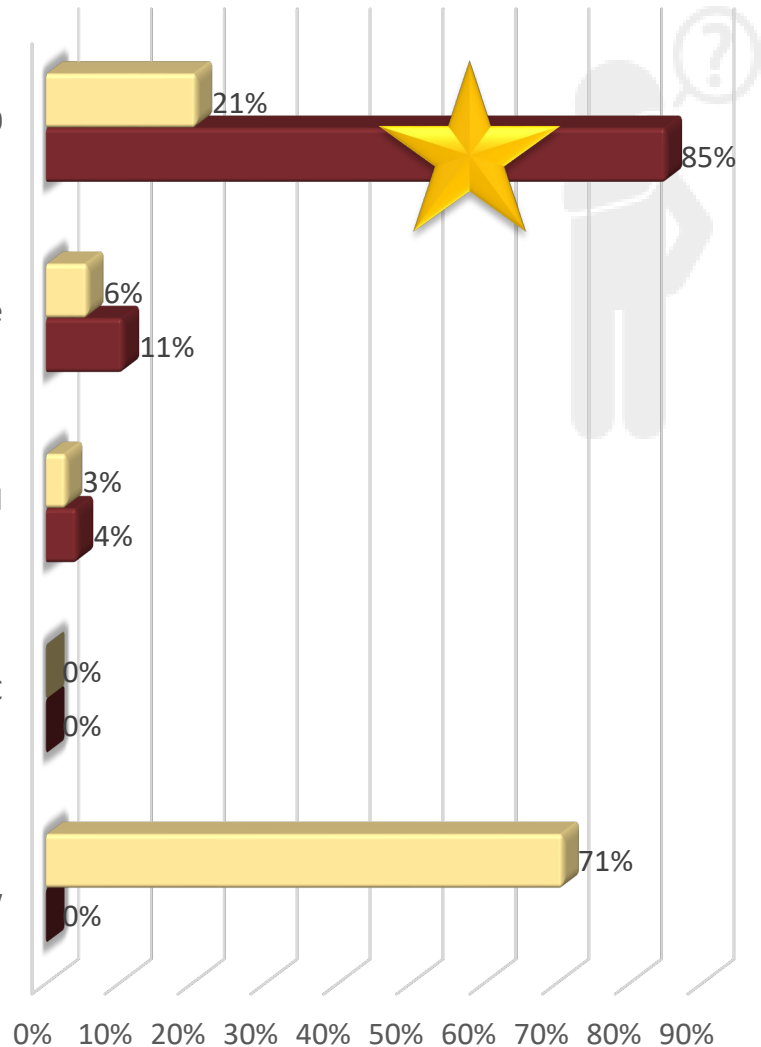
The annual rate of SCPC in the crizanlizumab 5.0 mg/kg group was reduced by 45% vs placebo

In the crizanlizumab 5.0 mg/kg group, the annual rate of SCPC was reduced by 33% vs placebo

Both crizanlizumab cohorts elicited equivalent annual rates of SCPC vs placebo

There was no difference in annual rates of SCPC among all treatment arms

I don't know



Pre-activity Post-activity